

**COMERCIAL OFFER FOR MANUFACTURING
OF PRE-FABRICATED WOOD FRAME HOUSE**



**Required foundation type:
Concrete slab with a finished floor(with laying communications and inside heating in the slab if required)**

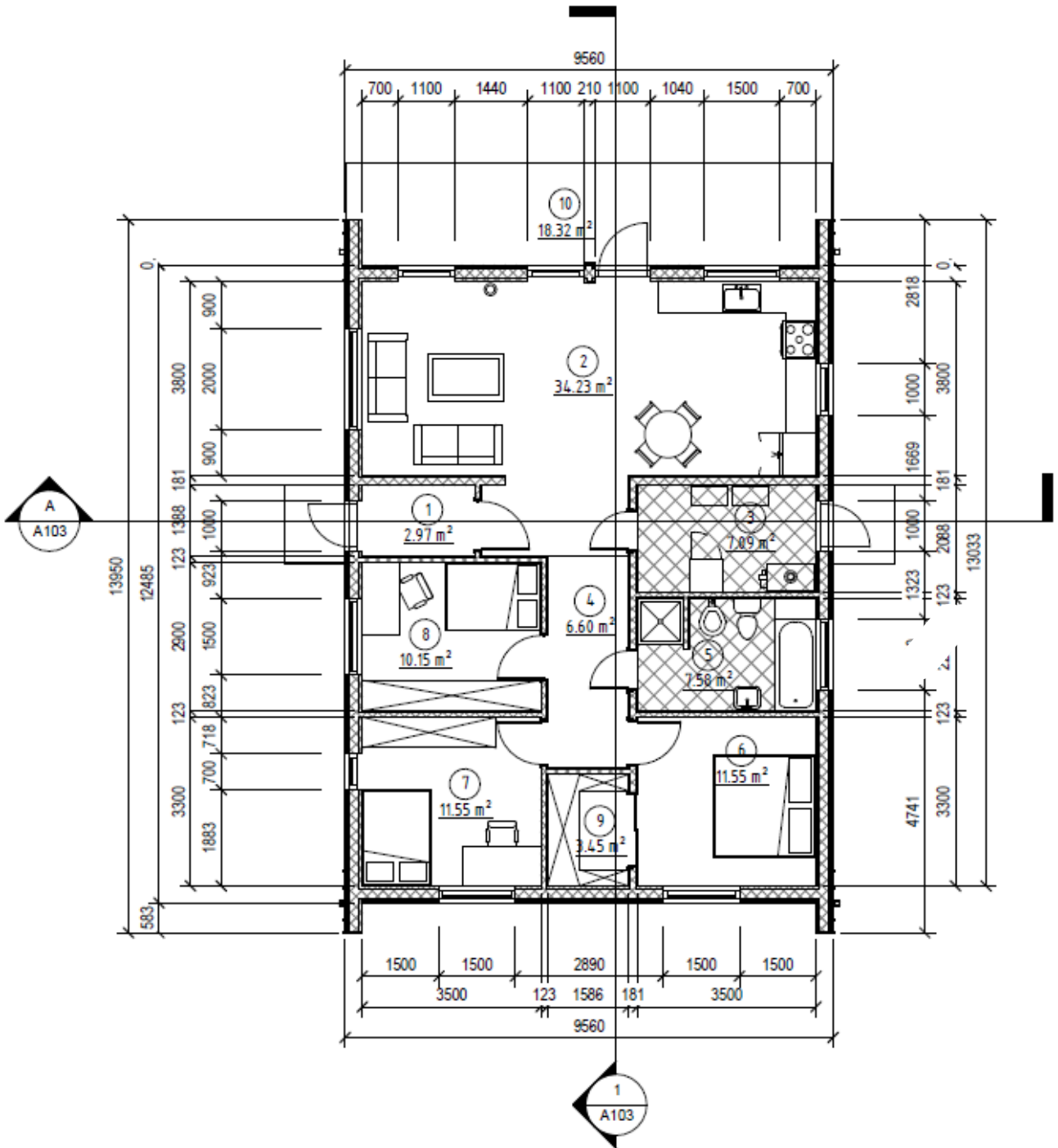


OBJECT VISUALITY

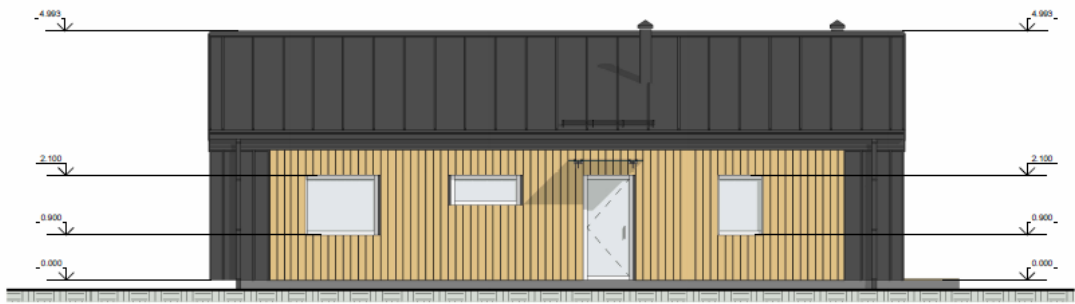


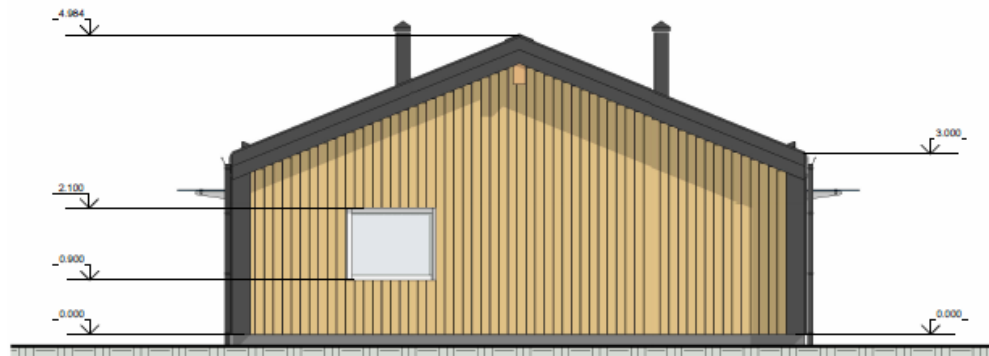
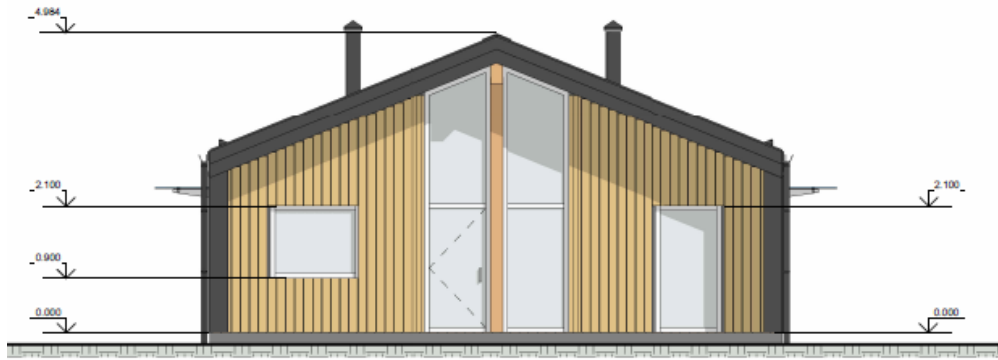


OBJECT PLAN OF THE FLOOR:




FACADES






PRE-FAB HOUSE SET SPECIFICATION OF ELEMENTS

1. Outside walls: 325 mm thickness, Height 2.70m.


	Produced on factory	Montage on the object	Material supply
Clapboard facade 18mm. x 95, 140, 190mm.	-	+	-
Metal Valc-profil RUUKI CLASSIC	-	+	-
Sheathing / counter. crate 25x50mm.	+	-	-
Diffusion membrane	+	-	-
Panel frame 45x195mm.	+	-	-
Panel insulation min. wool 2000mm.	+	-	-
Vapor barrier membrane	+	-	-
Internal control Lathing 45x45 mm.	+	-	-

Additional insulation (placed between the internal counter. Lathing) 50mm.	-	-	+
Drywall 12.5mm. x 2 layers	-	-	+
PVC windows 5 chambers	+	+	-
Entrance metal door	-	+	-

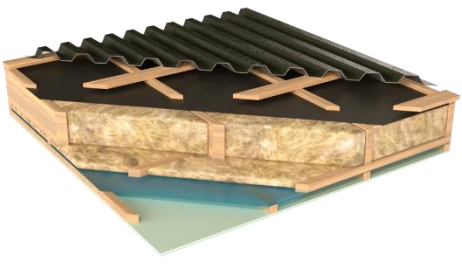
2. Internal load-bearing partition walls: 190 mm thickness, Height 2.70 m.

	Produced on factory	Montage on the object	Material supply
Drywall 12.5mm. x 2 layers.	+	-	-
Panel frame 45x145mm.	+	-	-
Insulation panel mineral wool 150 mm.	+	-	-
Drywall 12.5mm. x 2 layers.	-	-	+

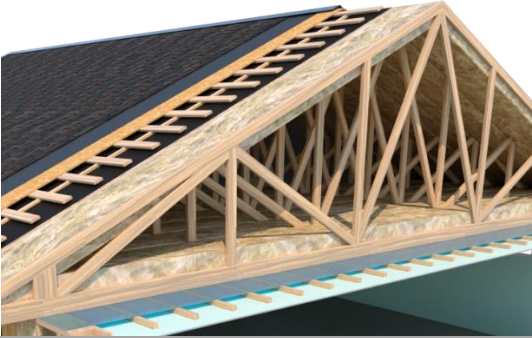
3. Internal partition wall: 140 mm thickness, Height 2.70 m.

	Produced on factory	Montage on the object	Material supply
Drywall 12.5mm. x 2 layers.	+	-	-
Panel frame 45x90mm.	+	-	-
Insulation panel mineral wool 100 mm.	+	-	-
Drywall 12.5mm. x 2 layers.	-	-	+

4. Roof construction and surface materials

	Produced on factory	Montage on the object	Material supply
Metal Valc-profil RUUKI CLASSIC	-	+	-
Control crate 25x100mm.	+ (95%)	+ (5%)	-
Lathing 25x50mm.	+	-	-
Diffusion membrane	+	-	-
Panel frame 45x245mm.	+	-	-
Roof insulation (fitted into the panel) min.wool 250mm.	+	-	-
Vapor barrier membrane	+	-	-
Internal control crate 45x45 mm.	+	-	-
Additional insulation of the roof (fits into the control crate 45x45) mineral wool 50mm.	-	-	+
Drywall 12.5mm.	-	-	+

5. Roof construction and surface materials

	Produced on factory	Montage on the object	Material supply
Metal Valc-profil RUUKI CLASSIC	-	+	-
Control crate 25x100mm.	-	+	-
Lathing 25x50mm.	-	+	-
Diffusion membrane	-	+	-
Farm frame 45x95,145,195mm.	+	-	-
Roof insulation (fitted into the panel) min.wool 300mm.	-	+	-
Vapor barrier membrane	-	+	-
Internal control crate 45x45 mm.	-	+	-
Additional insulation of the roof (fits into the control crate 45x45) mineral wool 50mm.	-	-	+
Drywall 12.5mm.	-	-	+

PRICE OFFER FOR PRE-FABRICATED WOOD FRAME HOUSE

•

Nr.	NAME	Q-ty
1	Wall panels manufacturing <ul style="list-style-type: none">• Outside loadbearing walls• Internal load-bearing walls• Internal wall partitions	Included
2	Roof structures manufacturing <ul style="list-style-type: none">• Roof insulation• Roof covering	Included
3	Internal insulation	Included
4	Windows according project information	Included
5	Entrance door according project information + PVC entrance door to garden	Included
6	Materials for exterior finishing of windows and door openings	Included
7	Rainwater drainage system according to drawings information	Included
8	Materials for interiors finishing works	Included

Price not include:

- Foundation works
- Montage works of house carcass
- Internal and external communications and decorations works

Manufacturing time: 10 weeks

Additional wishes and needs by negotiations.

Terms of payment: By separately confirmed agreement
