



Contents

J-101	Design Specifications	J-302	Facade of Doors and Windows
J-102	Floor Plan	J-303	Architectural Details of Doors
J-103	Ceiling Plan	J-304	Architectural Details of Windows
J-104	Diagram of General Kitchen and Bathroom Module	J-401	Lighting Power Layout
J-105	Diagram of Foldable Module	J-402	Socket Power Layout
J-106	3D Section View	J-403	Diagram of Power System
J-201	East Elevation layout	J-404	Water Supply and Drainage Plan
J-202	South Elevation Layout	J-405	Diagram of Water Supply and Drainage System
J-203	West Elevation layout	J-501	Section View of Wallboard
J-204	North Elevation Layout	J-502	Section View of Floor and Ceiling
J-205	Architectural Section	J-601	Diagram of Sealing Node
J-301	Doors and Windows Layout	J-701	3D Structure Diagram

Design Specifications

- The building area of the house is 39m², one floor in total.
- The indoor height is 2.3m.

Floor

- 3 in total, applied 80*80 steel frame (Q235, wall thickness 2.5mm), the square tube is galvanized and sprayed with plastic.
- 0.426mm Colored Steel Sheet (Surface AZM100g/m²+PE coated 20/5um)+ Steel Frame + Filled with PU for insulation + 8mm PVC (Width 1200mm).
- R-Value: 22.54 ft² • hr • F/BTU.

Front and Back Wall of the General Kitchen and Bathroom Module

- 2 in total, applied 80*80 steel frame (Q235, wall thickness 2.5mm), the square tube is galvanized and sprayed with plastic.
- 7.5mm Plank (surface is brushed with 500g/m² wood oil) + Steel Frame + 80mm PU + 9mm Bamboo and Wood Fiberboard (Width 600mm).
- R-Value: 22.66 ft² • hr • F/BTU.

Partition Wall of the General Kitchen and Bathroom Module

- 4 in total, applied 50*50 steel frame (Q355, wall thickness 1.5mm) the square tube is galvanized and sprayed with plastic.
- 9mm Bamboo and Wood Fiberboard (Width 600mm) + 9mm OSB Board + Steel Frame + 50mm Glass Wool + 9mm OSB Board + 9mm Bamboo and Wood Fiberboard (Width 600mm).
- R-Value: 13.51 ft² • hr • F/BTU.

Ceiling Board

- 3 in total, applied 80*80 steel frame (Q355, wall thickness 2.5mm), the square tube is galvanized and sprayed with plastic.
- 0.426mm Colored Steel Sheet (Surface AZM100g/m²+PE coated 20/5um)+ Steel Frame +80mm PU + 9mm Bamboo and Wood Fiberboard (Width 600mm).
- R-Value: 22.43 ft² • hr • F/BTU.

Foldable Walls

- 6 in total, applied 75*68 (convex 18) frame (wall thickness 1.8mm), galvanized and sprayed with plastic.
- 27mm Craved Metal Board + Steel Frame +75mm PU + 9mm Bamboo and Wood Fiberboard (Width 600mm)
- R-Value: 26.18 ft² • hr • F/BTU.

Doors

- Aluminum Alloy Double Door
- Wooden Single Door with Steel Frame

Windows

- Aluminum Casement Window/Top-Hung Window

Furniture

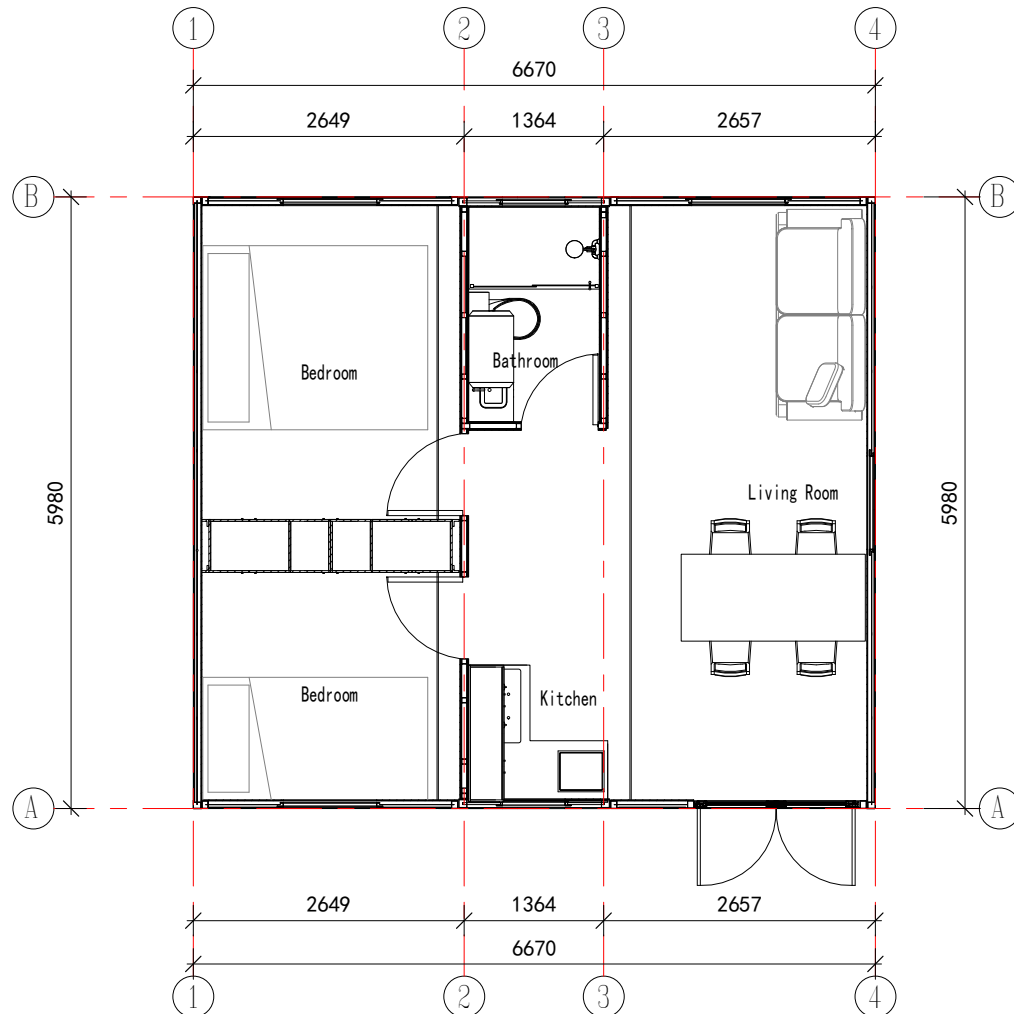
- L-Shaped Cabinet (Floor Cabinet included) *1
- Wall Cupboard (Length 1335mm) *1
- Demanded Water Heater *1
- Closet *1

Sanitary

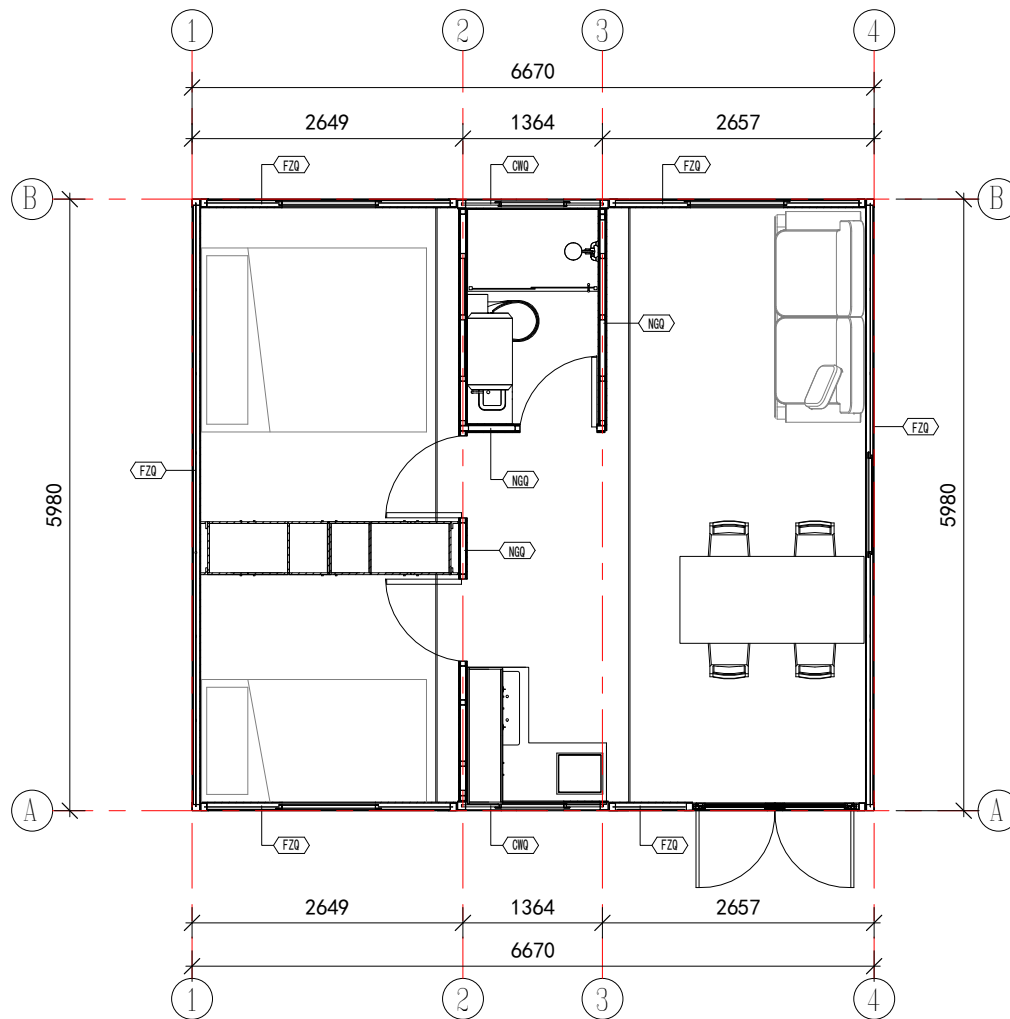
- Porcelain Toilet *1
- Wash Basin *1
- Shower Room *1
- Bathroom Heat Lamp *1

Electricity

- China/America/Australia/Europe Standard Electricity + China Standard Water Supply + Dome Light *10.



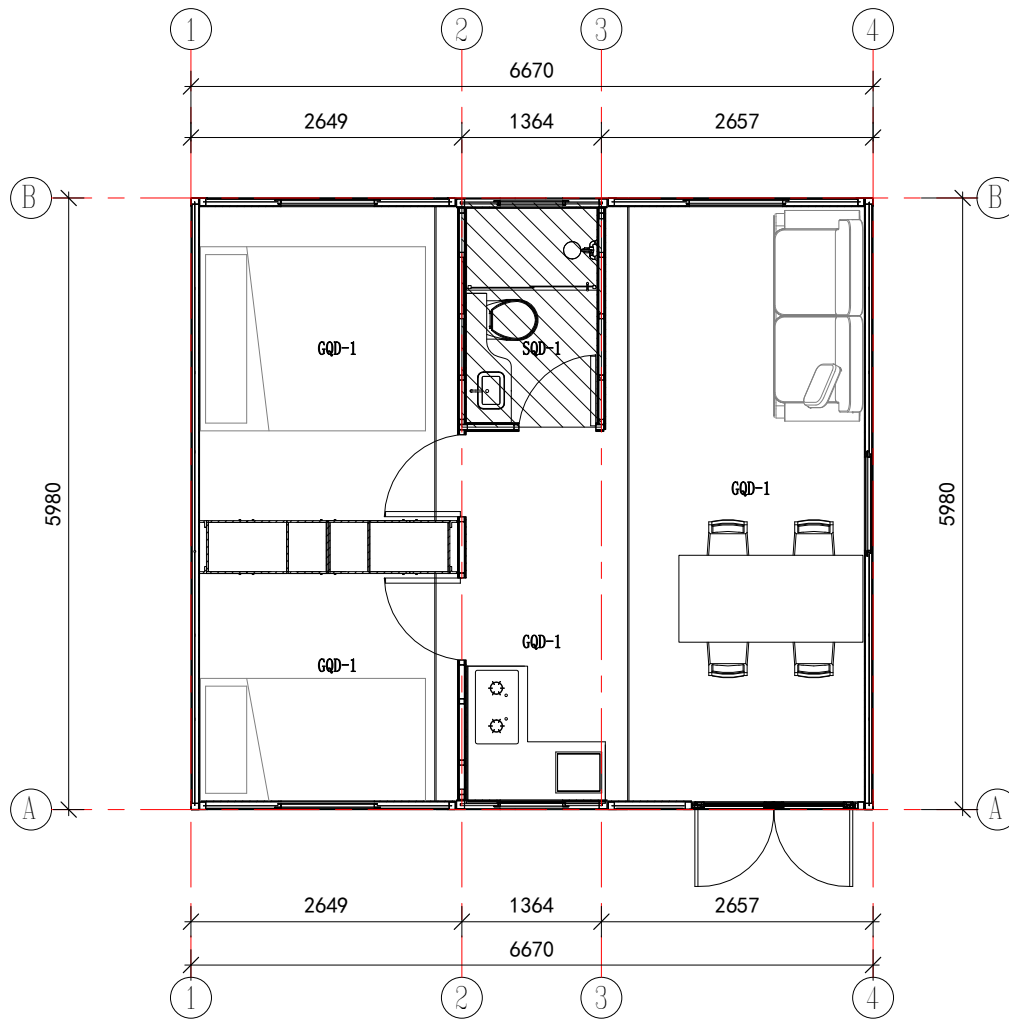
Floor Plan



Wall Legend

- | | |
|------------|---|
| CWQ | 7.5mm Plank (surface is brushed with 500g/m ² wood oil) + Steel Frame + 80mm PU + 9mm Bamboo and Wood Fiberboard (Width 600mm) |
| NGQ | 9mm Bamboo and Wood Fiberboard (Width 600mm) + 9mm OSB Board + Steel Frame + 50mm Glass Wool + 9mm OSB Board + 9mm Bamboo and Wood Fiberboard (Width 600mm) |
| FZQ | 27mm Craved Metal Board + Steel Frame + 75mm PU + 9mm Bamboo and Wood Fiberboard (Width 600mm) |

Detailed Layout Plan



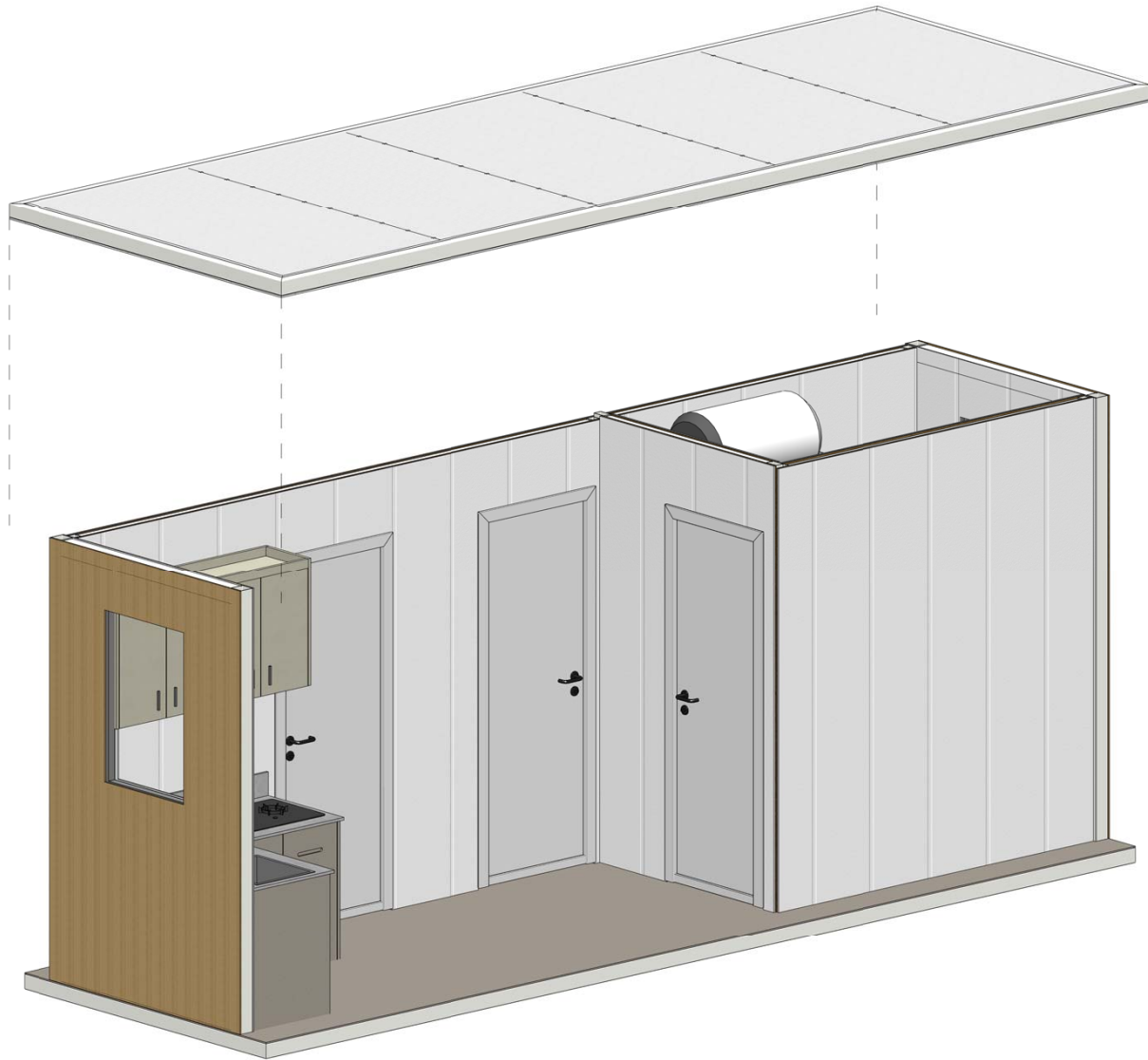
Annotation

GQD-1 Dry Zone Ceiling: 9mm Bamboo and Wood Fiberboard

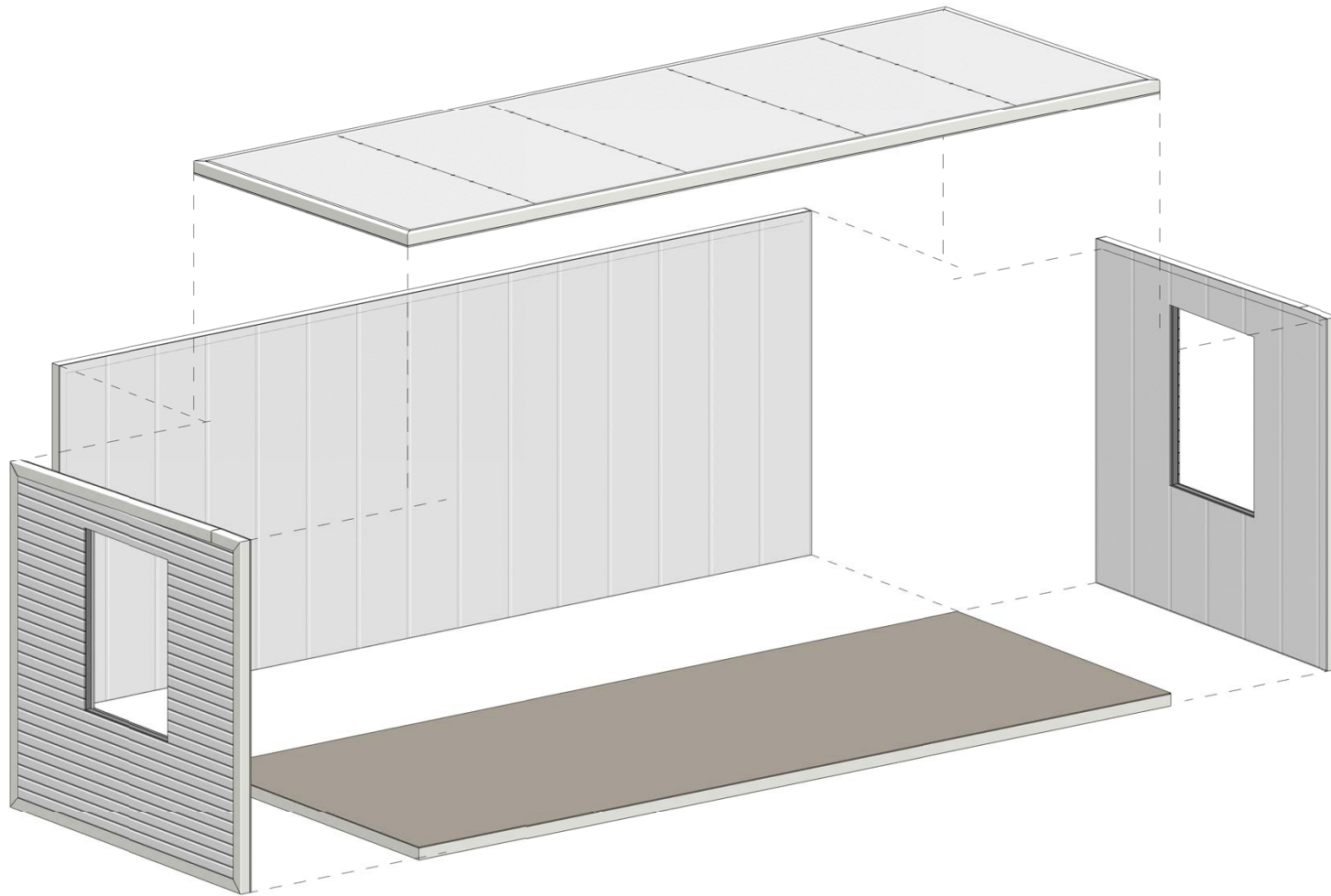
SQD-1 Wet Zone Ceiling: Aluminum Alloy Integrated Ceiling

(Ceiling keel included)

Ceiling Plan



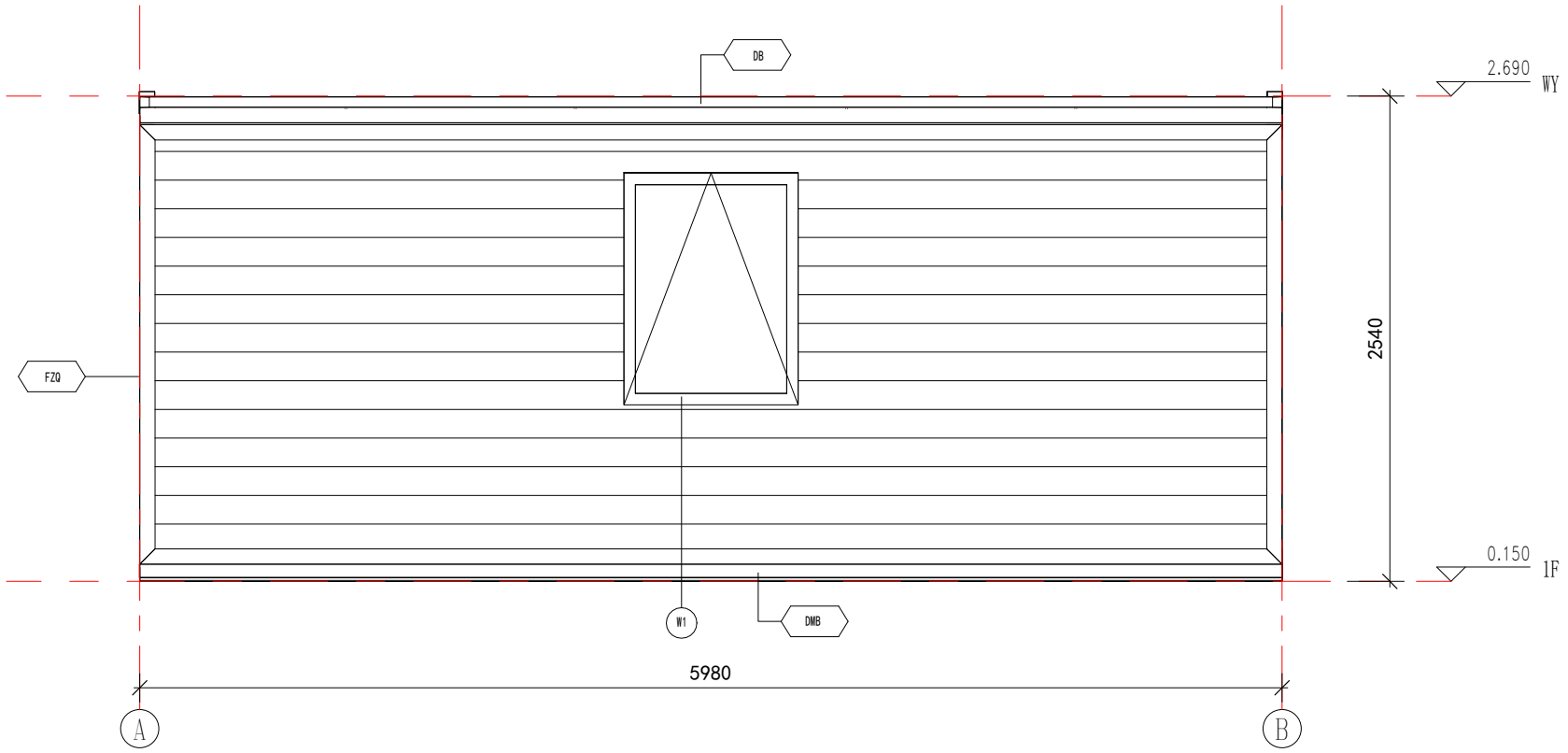
General Kitchen and Bathroom Module



Foldable Module

2 in total, 1 on each side

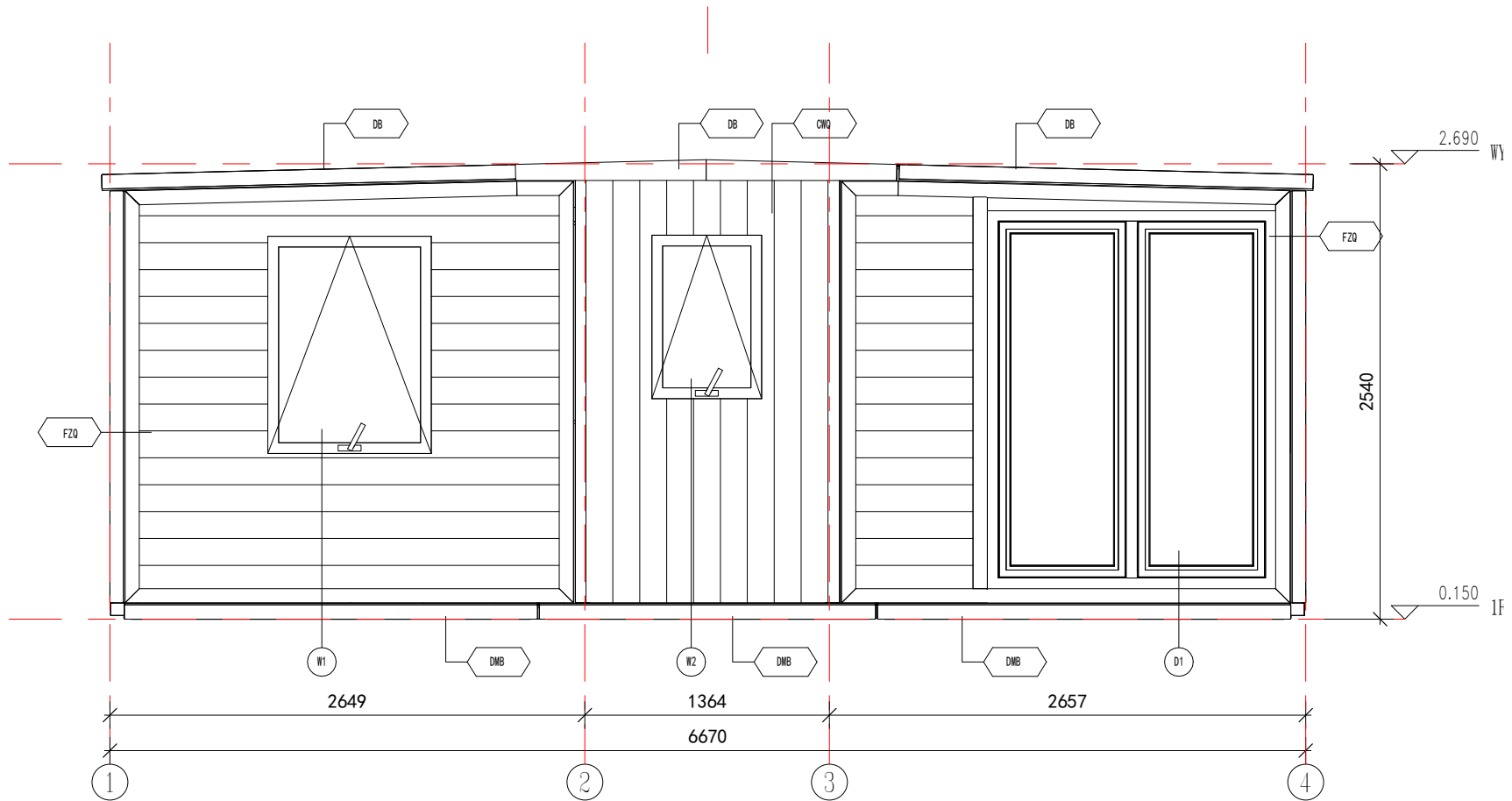




East Elevation Layout

Annotation

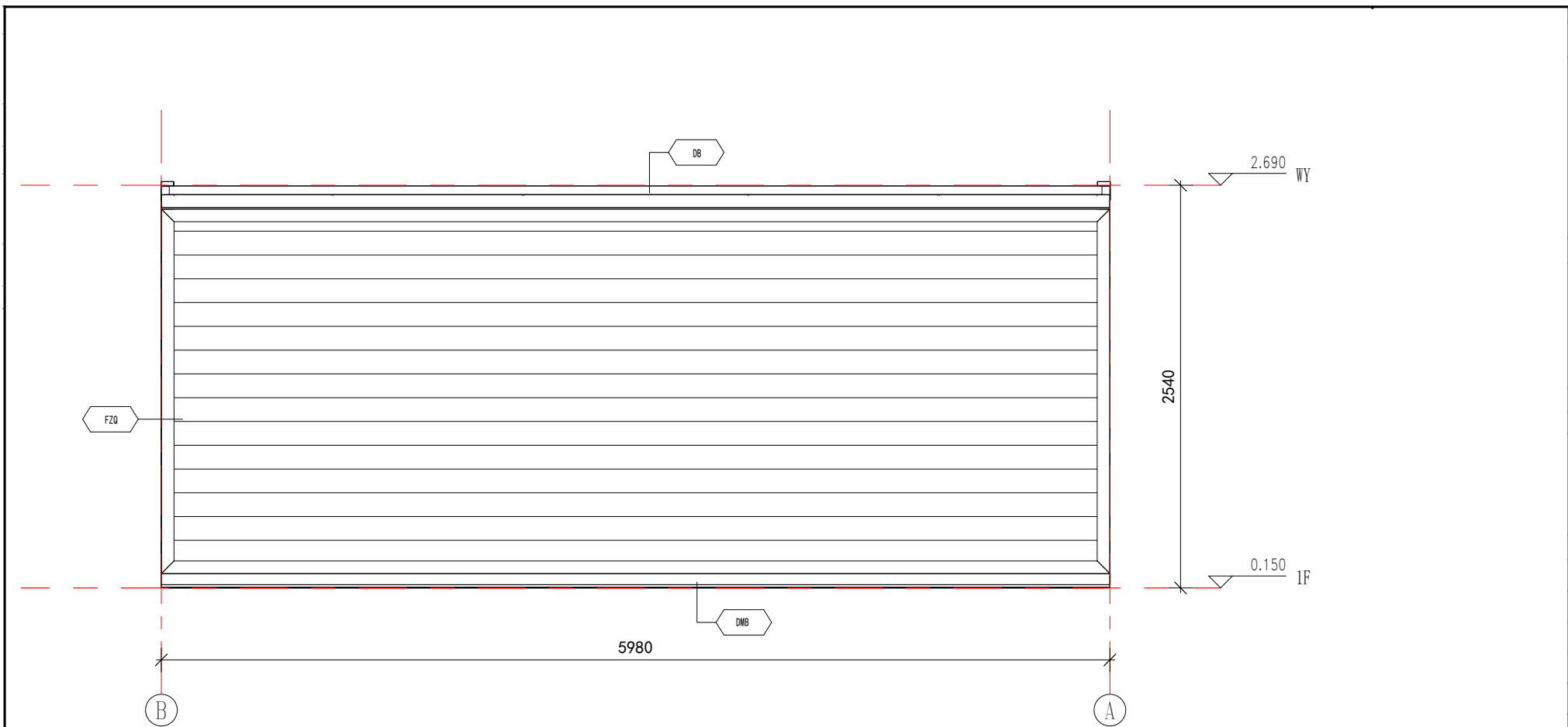
- DB** 0.426mm Colored Steel Sheet (Surface AZM100g/m²+PE coated 20/5um)+ Steel Frame +80mm PU + 9mm Bamboo and Wood Fiberboard (Width 600mm)
- DMB** 0.426mm Colored Steel Sheet (Surface AZM100g/m²+PE coated 20/5um)+ Steel Frame + Filled with PU for insulation + 8mm PVC (Width 1200mm)
- FZQ** 27mm Craved Metal Board + Steel Frame +75mm PU + 9mm Bamboo and Wood Fiberboard (Width 600mm)



South Elevation Layout

Annotation

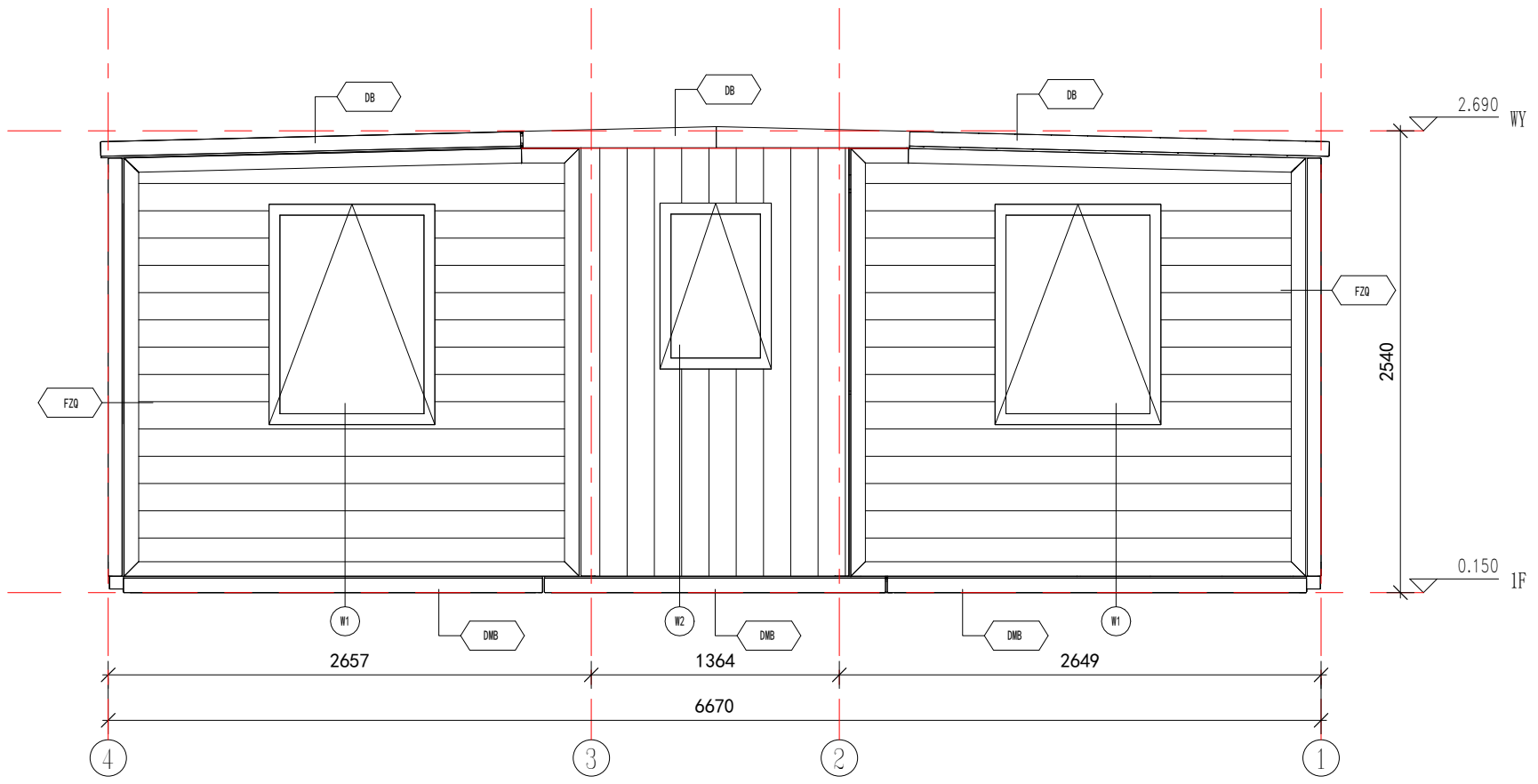
- | | |
|------------|--|
| DB | 0.426mm Colored Steel Sheet (Surface AZM100g/m ² +PE coated 20/5um)+ Steel Frame +80mm PU + 9mm Bamboo and Wood Fiberboard (Width 600mm) |
| DMB | 0.426mm Colored Steel Sheet (Surface AZM100g/m ² +PE coated 20/5um)+ Steel Frame + Filled with PU for insulation + 8mm PVC (Width 1200mm) |
| FZQ | 27mm Craved Metal Board + Steel Frame +75mm PU + 9mm Bamboo and Wood Fiberboard (Width 600mm) |
| CWQ | 7.5mm Plank (surface is brushed with 500g/m ² wood oil) + Steel Frame + 80mm PU + 9mm Bamboo and Wood Fiberboard (Width 600mm) |



West Elevation Layout

Annotation

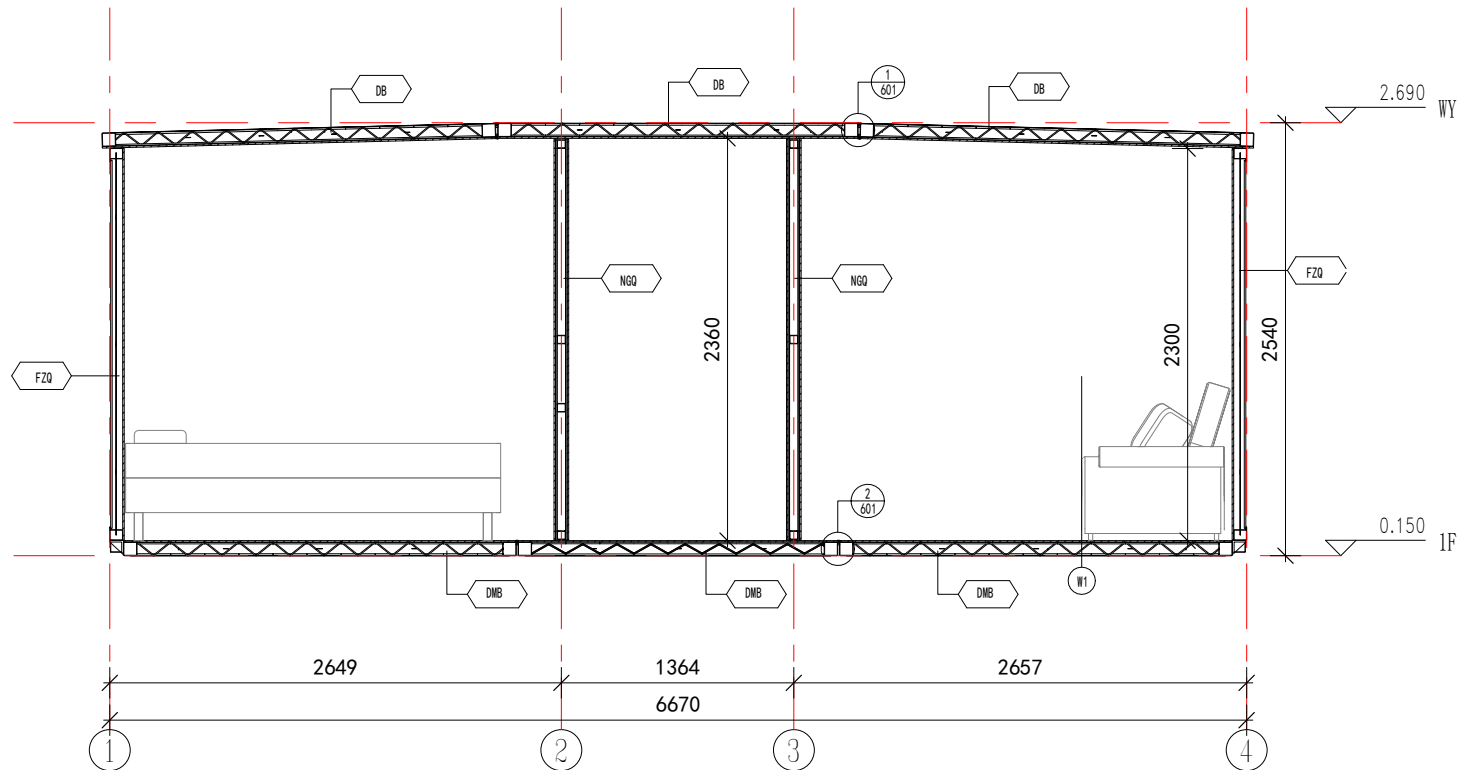
- DB** 0.426mm Colored Steel Sheet (Surface AZM100g/m²+PE coated 20/5um)+ Steel Frame +80mm PU + 9mm Bamboo and Wood Fiberboard (Width 600mm)
- DMB** 0.426mm Colored Steel Sheet (Surface AZM100g/m²+PE coated 20/5um)+ Steel Frame + Filled with PU for insulation + 8mm PVC (Width 1200mm)
- FZQ** 27mm Craved Metal Board + Steel Frame +75mm PU + 9mm Bamboo and Wood Fiberboard (Width 600mm)



North Elevation Layout

Annotation

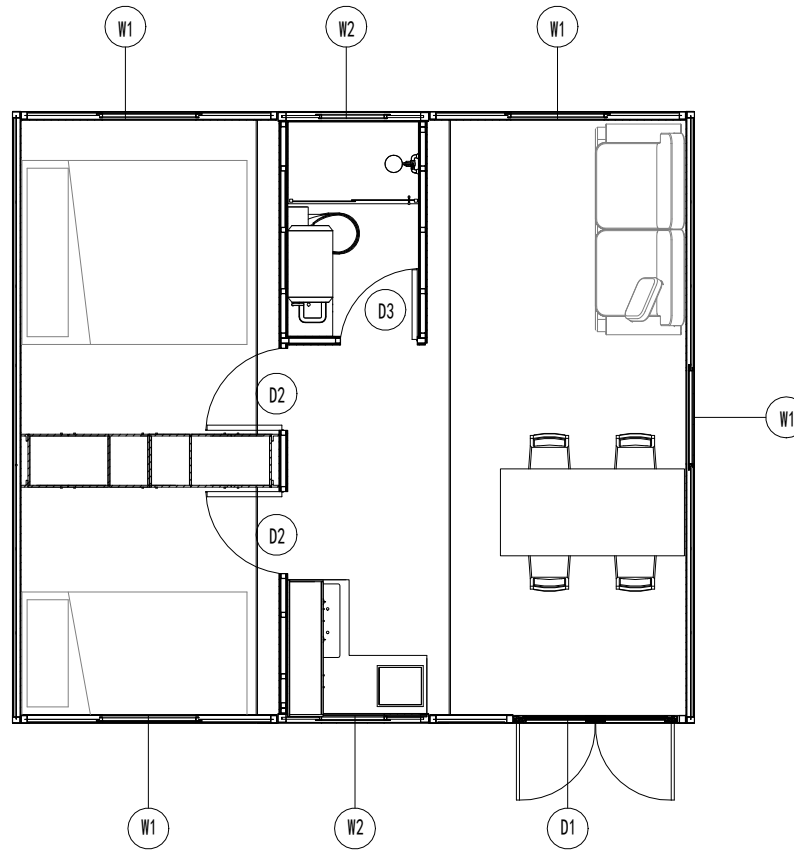
- DB** 0.426mm Colored Steel Sheet (Surface AZM100g/m²+PE coated 20/5um)+ Steel Frame +80mm PU + 9mm Bamboo and Wood Fiberboard (Width 600mm)
- DMB** 0.426mm Colored Steel Sheet (Surface AZM100g/m²+PE coated 20/5um)+ Steel Frame + Filled with PU for insulation + 8mm PVC (Width 1200mm)
- FZQ** 27mm Craved Metal Board + Steel Frame +75mm PU + 9mm Bamboo and Wood Fiberboard (Width 600mm)
- CWQ** 7.5mm Plank (surface is brushed with 500g/m² wood oil) + Steel Frame + 80mm PU + 9mm Bamboo and Wood Fiberboard (Width 600mm)



Architectural Section

Annotation

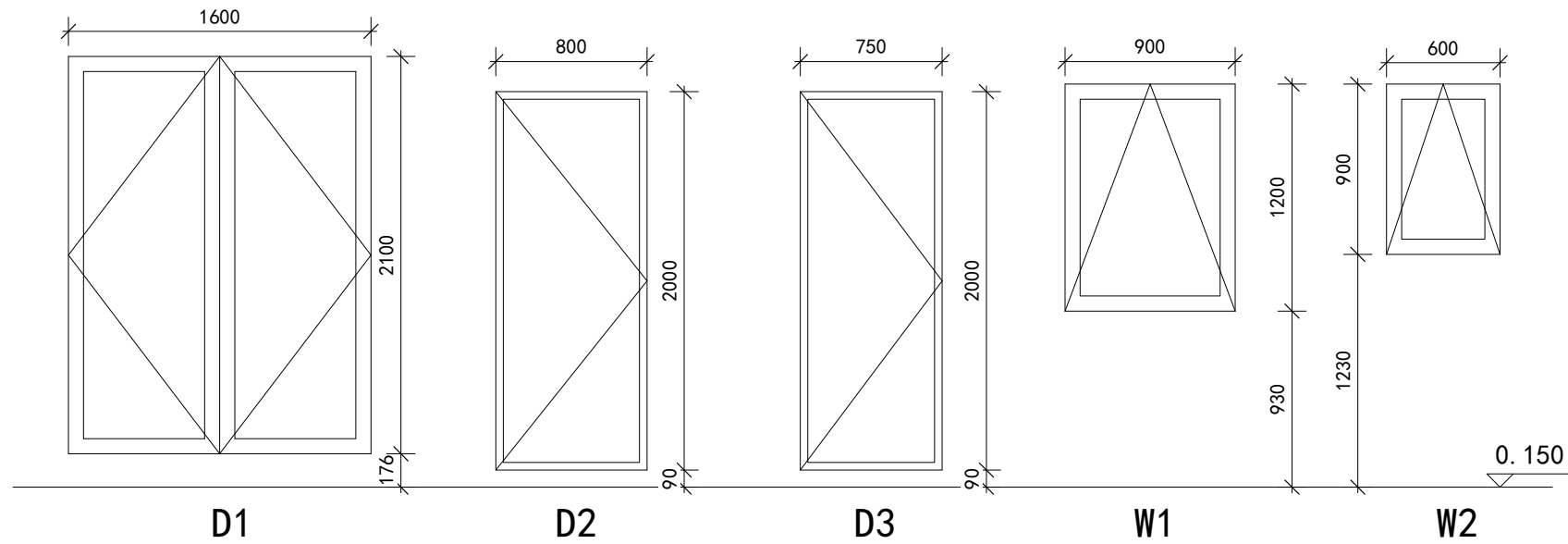
- | | |
|------------|---|
| DB | 0.426mm Colored Steel Sheet (Surface AZM100g/m ² +PE coated 20/5um)+ Steel Frame +80mm PU + 9mm Bamboo and Wood Fiberboard (Width 600mm) |
| DMB | 0.426mm Colored Steel Sheet (Surface AZM100g/m ² +PE coated 20/5um)+ Steel Frame + Filled with PU for insulation + 8mm PVC (Width 1200mm) |
| FZQ | 27mm Craved Metal Board + Steel Frame +75mm PU + 9mm Bamboo and Wood Fiberboard (Width 600mm) |
| NGQ | 9mm Bamboo and Wood Fiberboard (Width 600mm) + 9mm OSB Board + Steel Frame + 50mm Glass Wool + 9mm OSB Board + 9mm Bamboo and Wood Fiberboard (Width 600mm) |



Doors and Windows Layout

List of Windows

Serial Number	Name	Height	Width	Ground Height	HH	Frame Color of Door/Window	Quantity
D1	Aluminum Alloy Double Glass Double Door	2100mm	1600mm	176mm	2276mm	Black	1
D2	Wooden Door with Steel Frame	2000mm	800mm	90mm	2090mm	White	2
D3	Wooden Door with Steel Frame	2000mm	750mm	90mm	2090mm	White	1
W1	Aluminum Alloy Double Glass Top-Hung Window	1200mm	900mm	930mm	2130mm	Black	4
W1	Aluminum Alloy Double Glass Top-Hung Window	900mm	600mm	1230mm	2130mm	Black	2

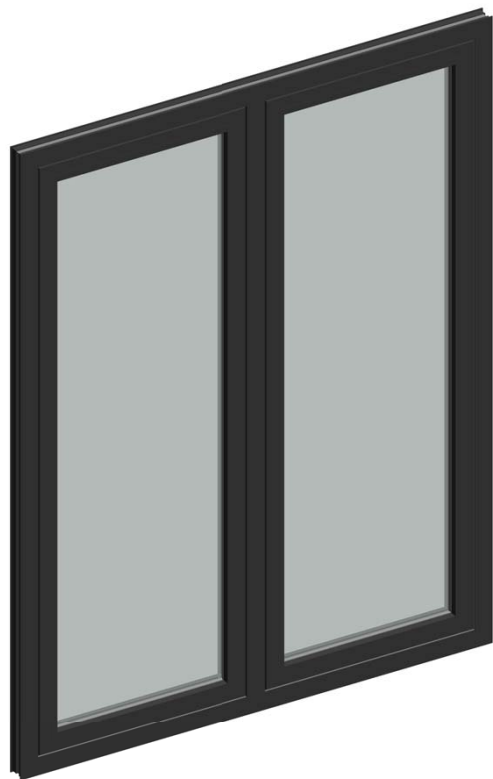


Facade of Doors and Windows

List of Windows

Serial Number	Name	Height	Width	Ground Height	HH	Frame Color of Door/Window	Quantity
D1	Aluminum Alloy Double Glass Double Door	2100mm	1600mm	176mm	2276mm	Black	1
D2	Wooden Door with Steel Frame	2000mm	800mm	90mm	2090mm	White	2
D3	Wooden Door with Steel Frame	2000mm	750mm	90mm	2090mm	White	1
W1	Aluminum Alloy Double Glass Top-Hung Window	1200mm	900mm	930mm	2130mm	Black	4
W1	Aluminum Alloy Double Glass Top-Hung Window	900mm	600mm	1230mm	2130mm	Black	2

List of Doors and Windows

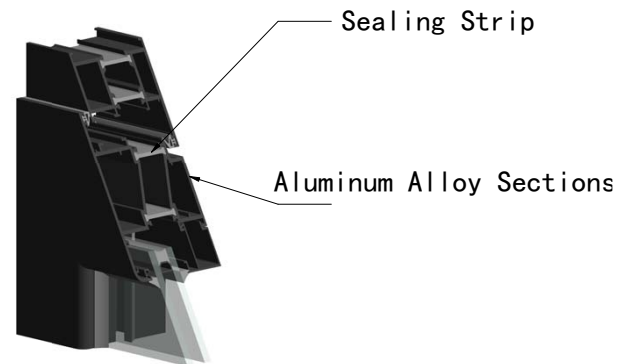
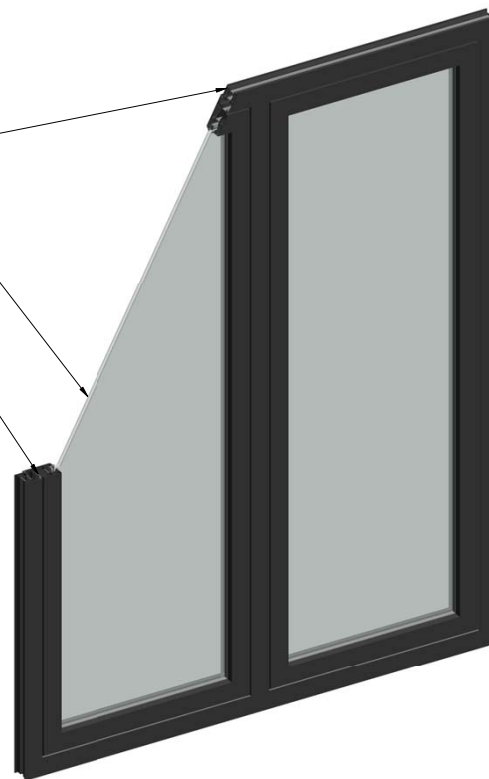


D1 Architectural Details

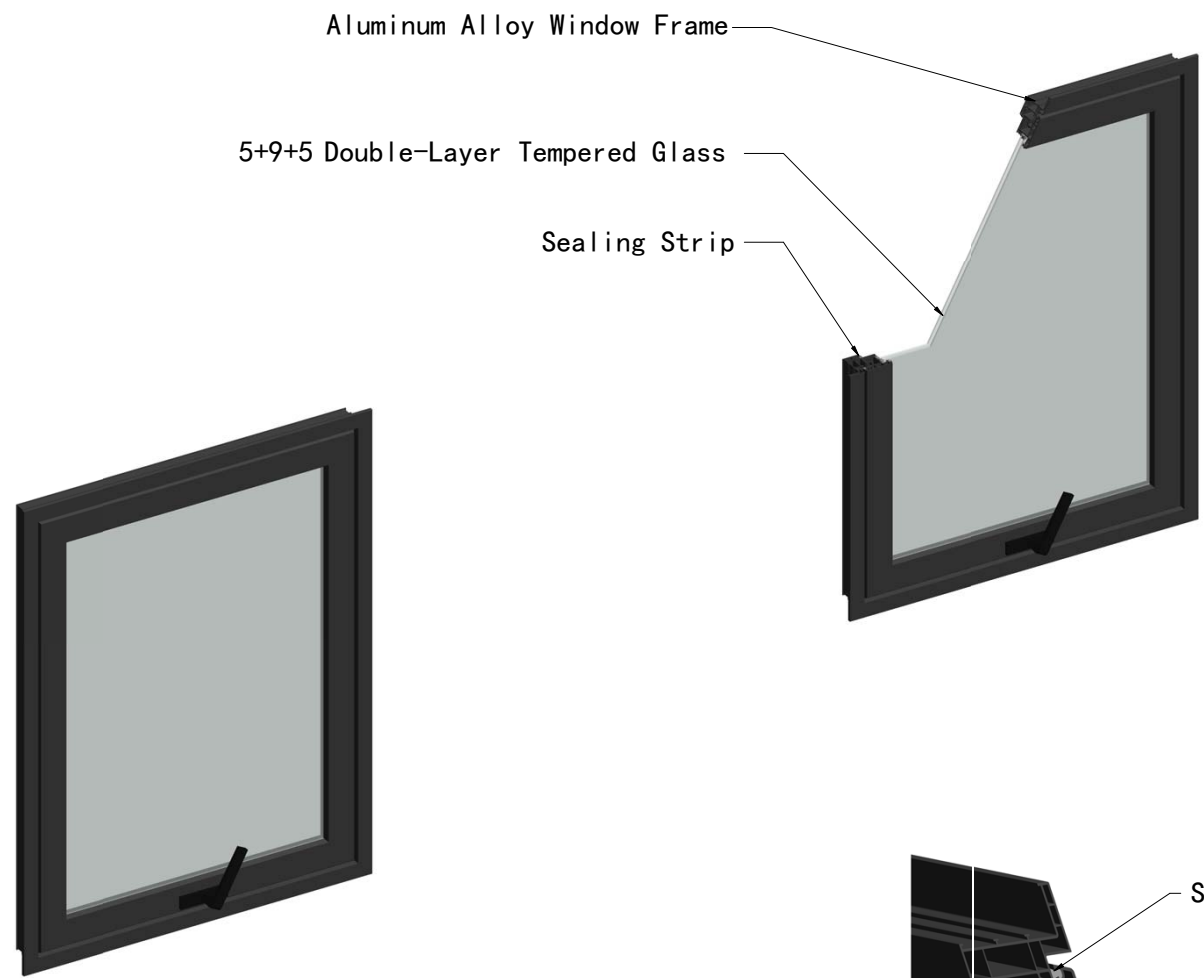
5+9+5 Double-Layer Tempered Glass

Sealing Strip

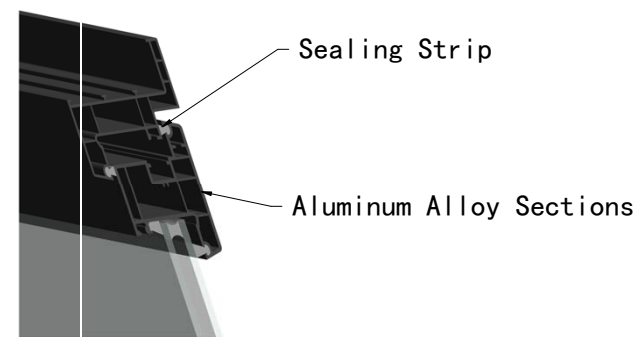
Aluminum Alloy Door Frame



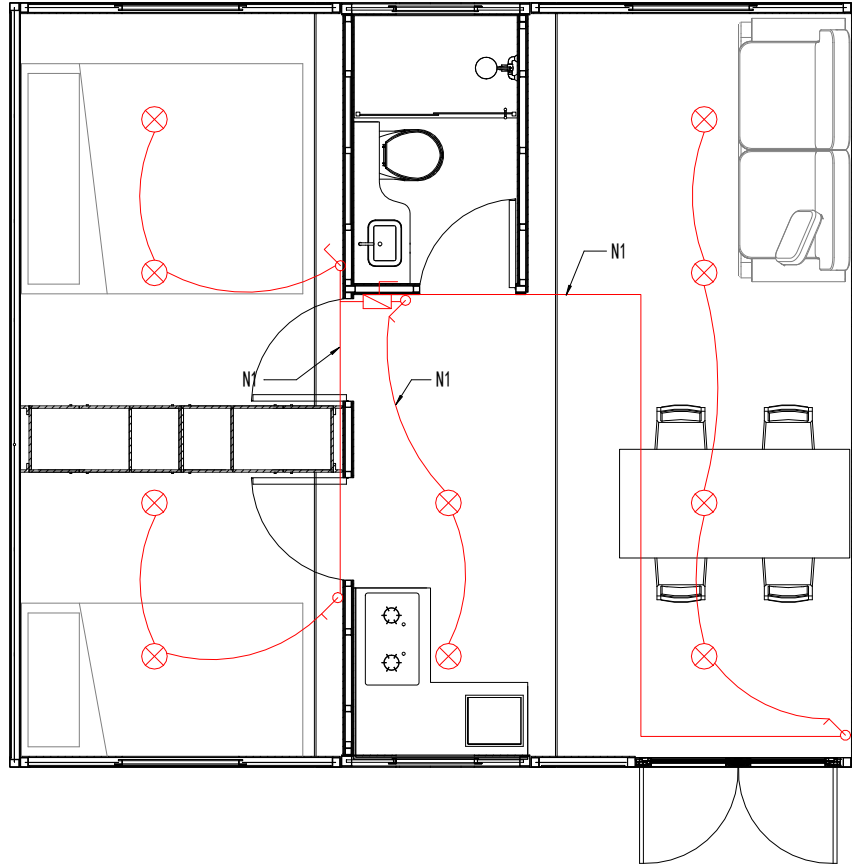
Architectural Details of Door Material



W1、W2 Architectural Details



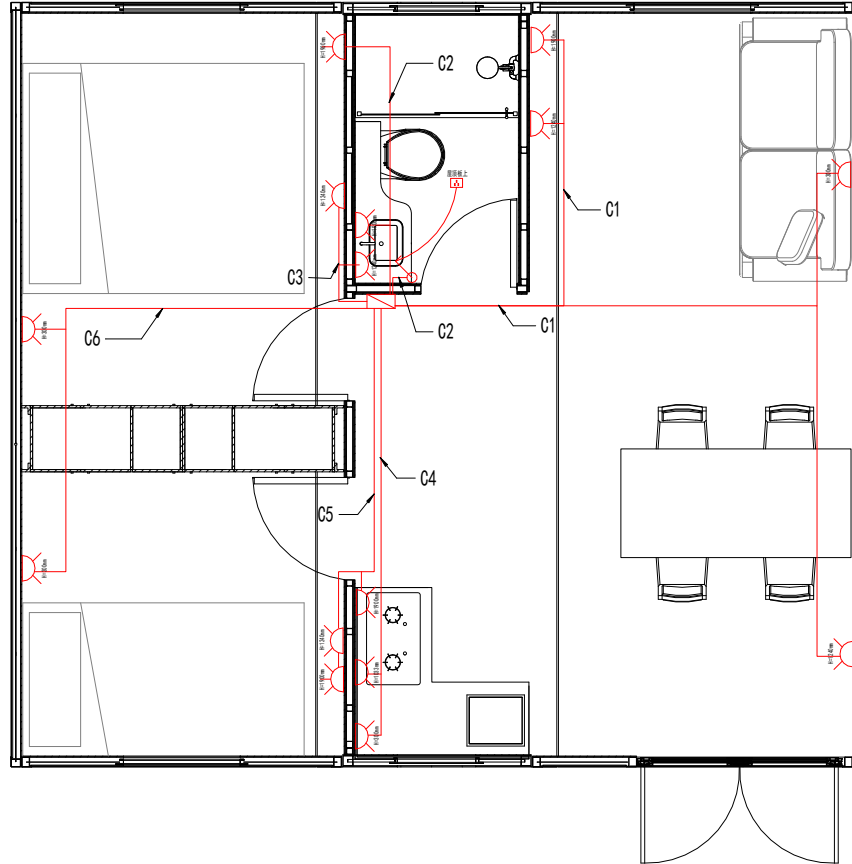
Architectural Details of Window Material



Lighting Power Layout




Electrical Equipment

Sign	Name	Qty
⊗	Dome Light	10
⊠	Bathroom Heat Lamp Socket	1
⏏	Single Control Switch (H=1240mm)	5
▭	Distribution Box	1



Socket Power Layout

Electrical Equipment

Sign	Name	Qty
	Double-Plug Socket	12
	AC Socket	3
	Distribution Box	1

Distribution Box

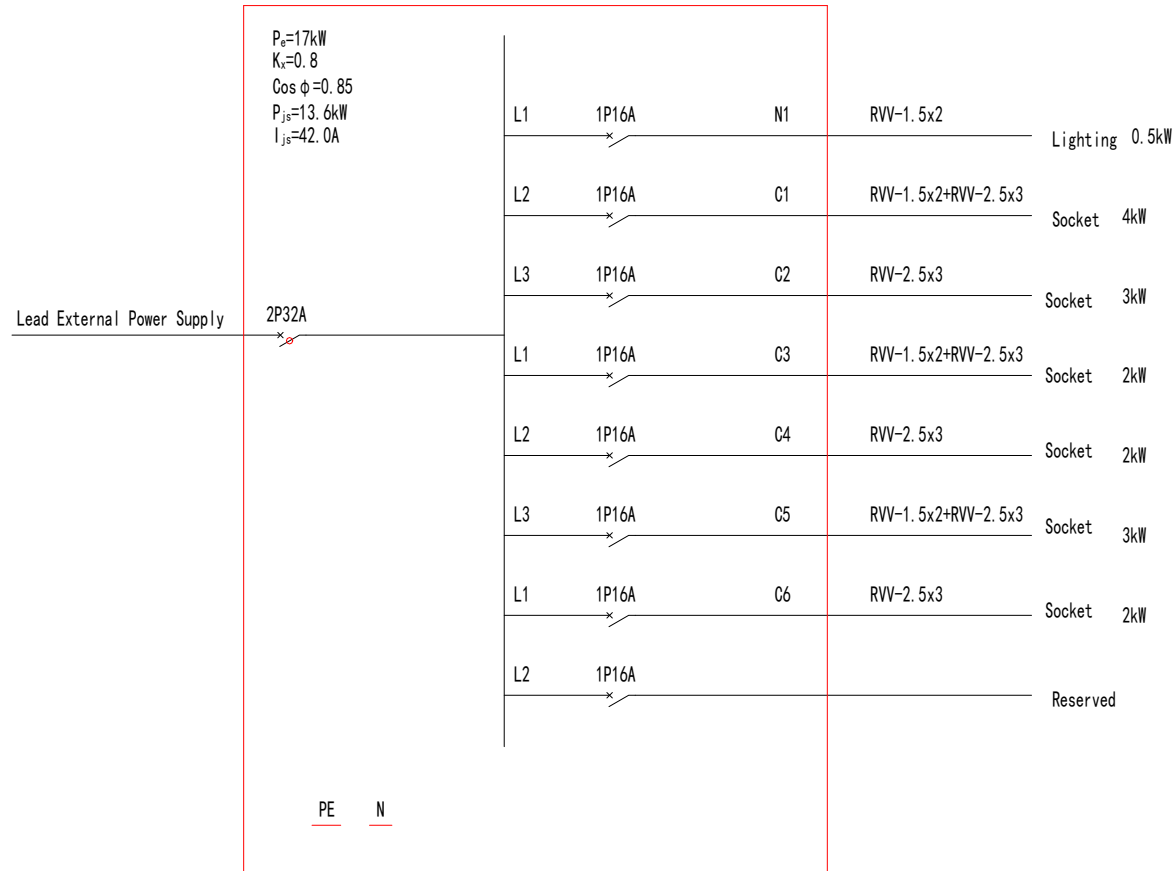
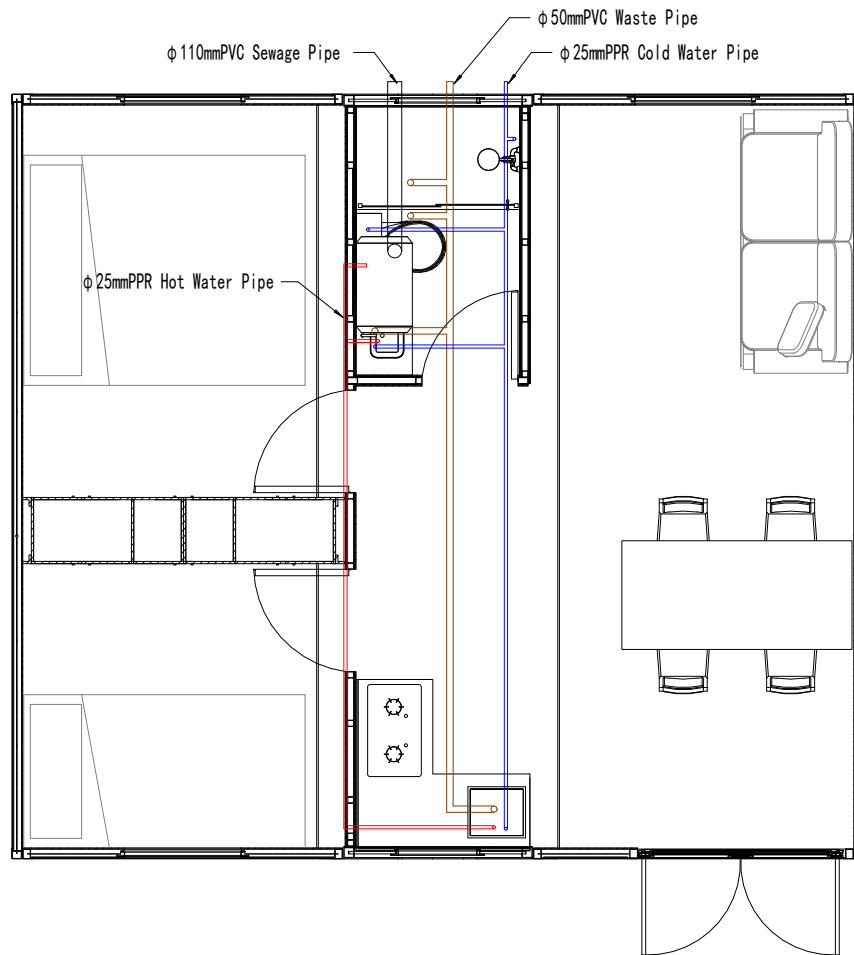


Diagram of Power System



Water Supply and Drainage Plan

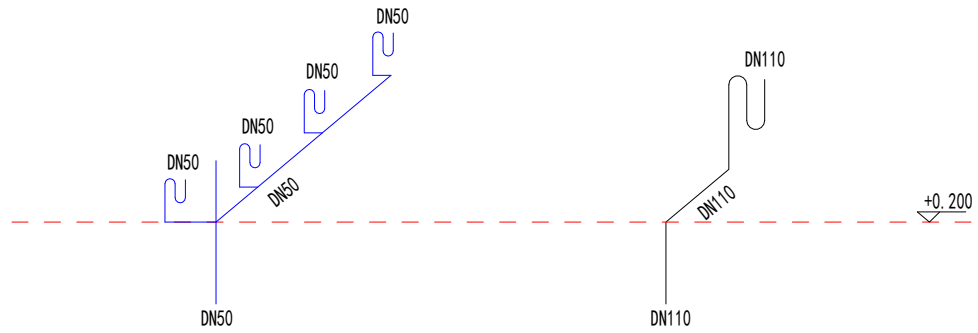


Diagram of Waste Water Drainage System

Diagram of Sewage Drainage System

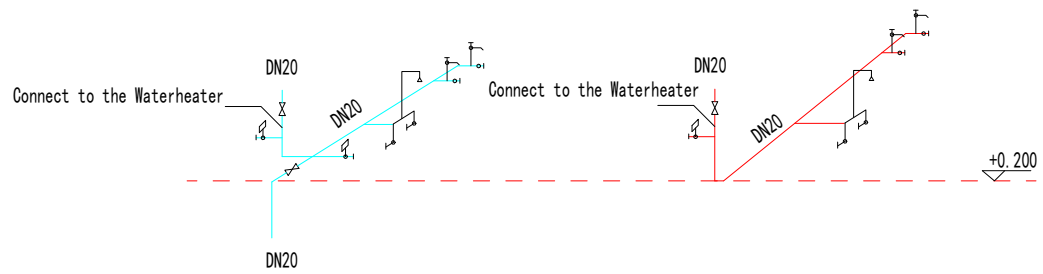
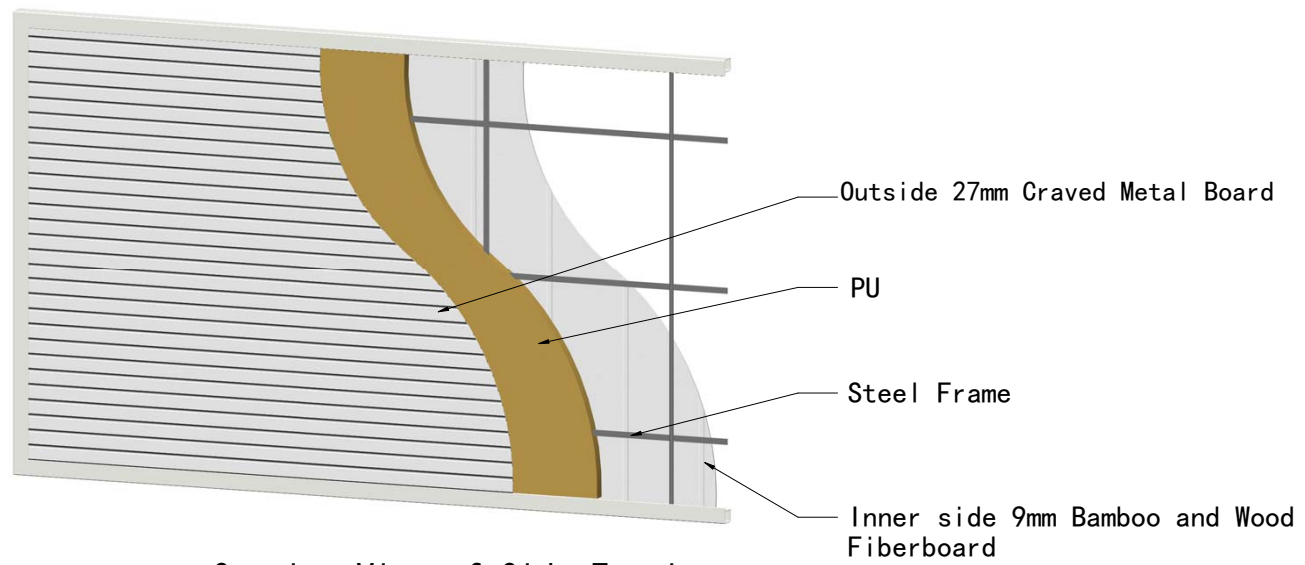
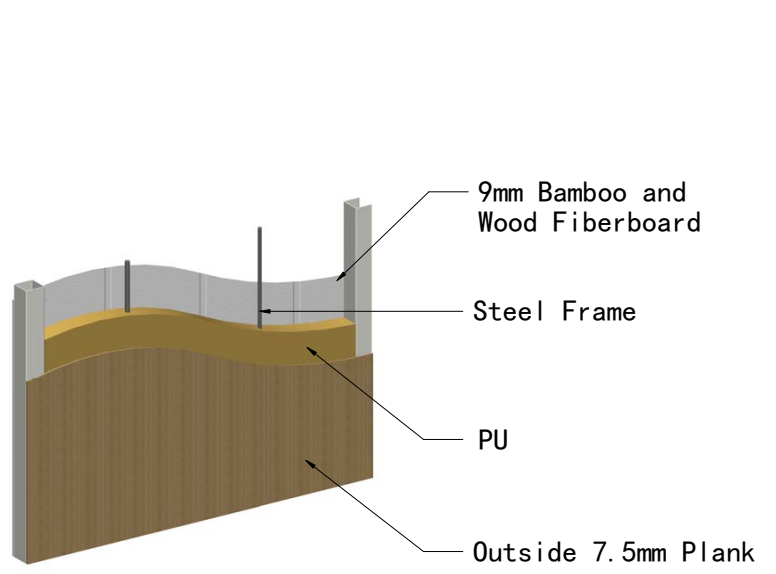


Diagram of Cold Water Inlet System

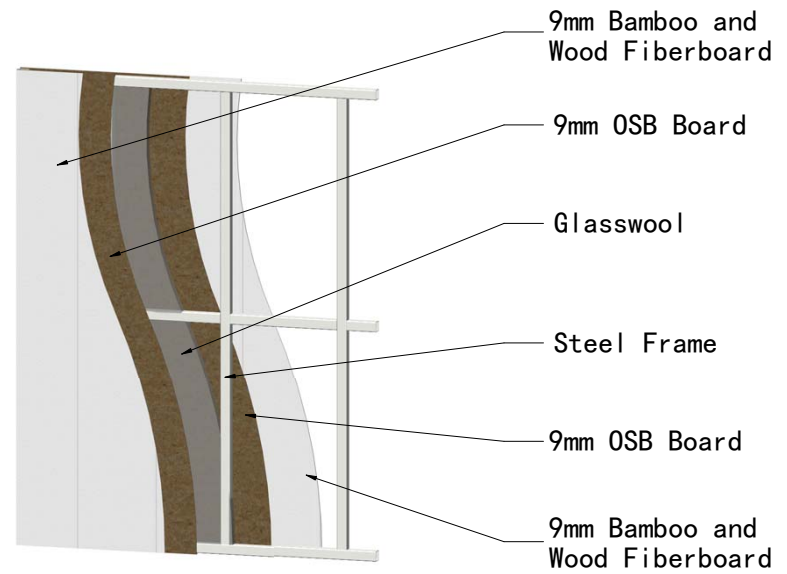
Diagram of Hot Water Inlet System



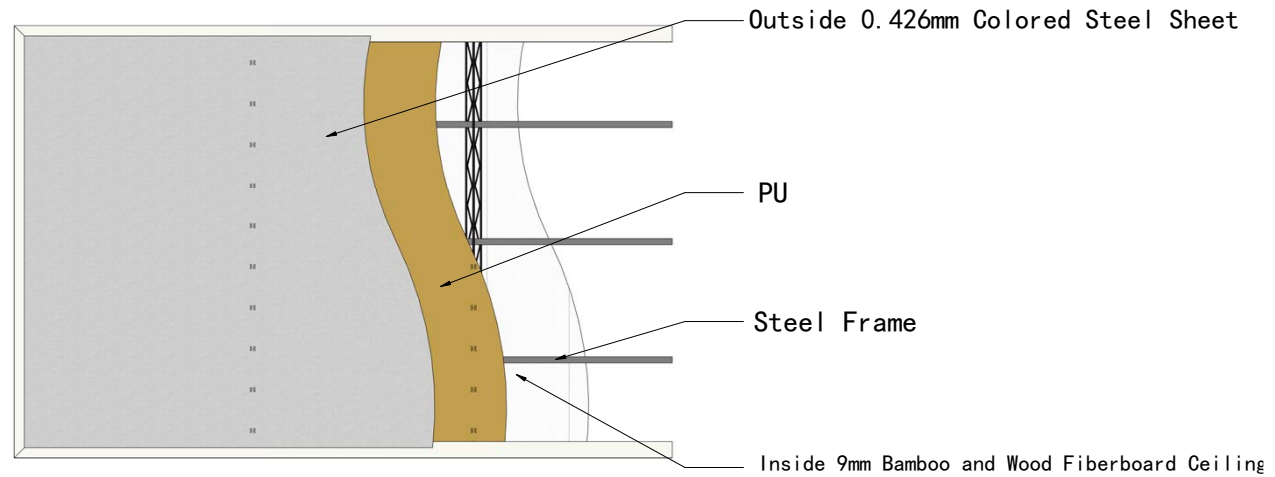
Section View of Side Fascia



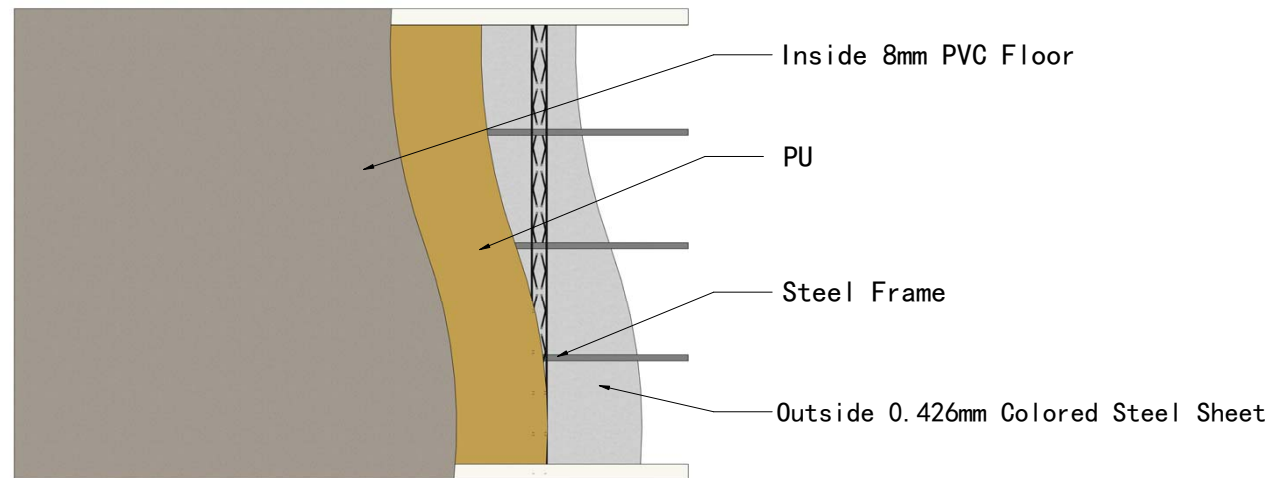
Section View of Side Fascia of Kitchen and Bathroom Module



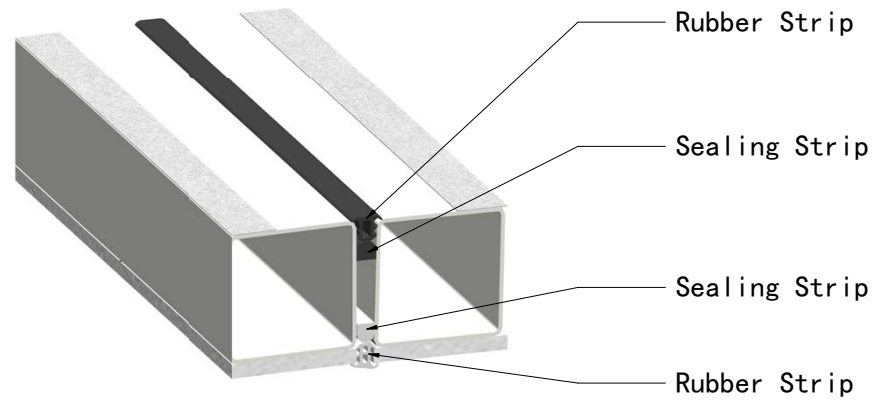
Section View of Interior Wallboard



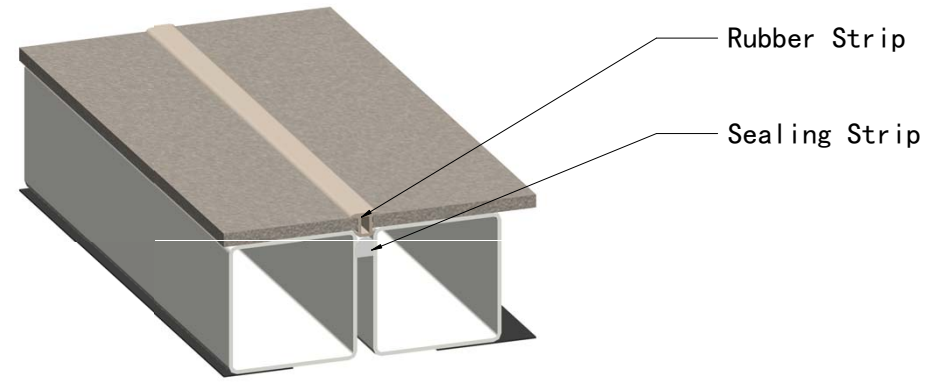
Section View of Ceiling



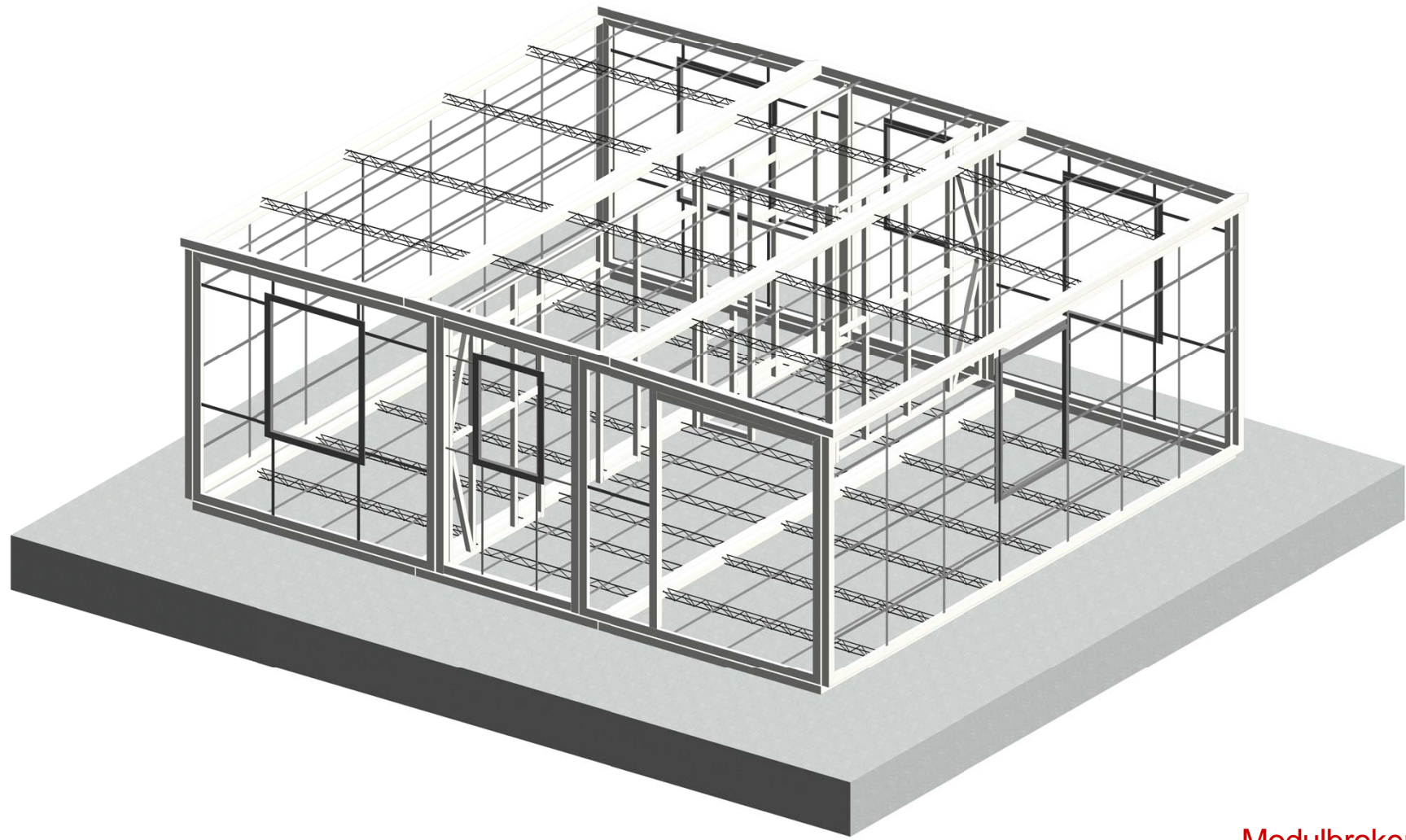
Section View of Floor



① Architectural Details of Ceiling Sealing Strips



② Architectural Details of Floor Sealing Strips



Modulbroker Sweden AB